

**Boardwalk**

# Banwell Road

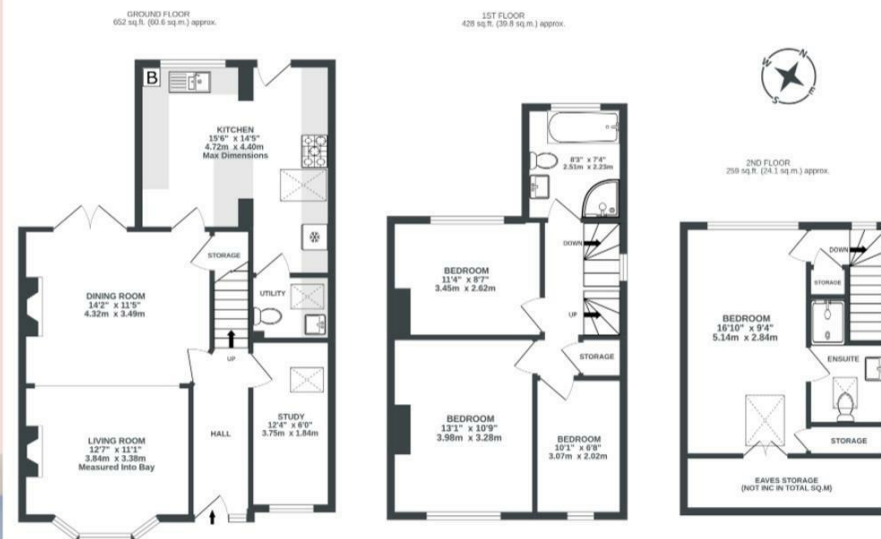
ASHTON, BRISTOL

**Boardwalk**

## Banwell Road ASHTON

APPROXIMATE FLOOR AREA  
124.5 SQM / 1340 SQFT

BOOK A VIEWING  
01174 532 985  
hello@boardwalkpropertyco.com



Illustrations are for reference purposes only, measurements are approximate, not to scale.



**Boardwalk**

# Banwell Road

ASHTON, BRISTOL



£600,000



Bristol, BS3

2DW



4 Bedrooms



2 Bathrooms

*"Six years ago we set out looking for our first home with the criteria of good location, parking and a decent garden. With vibrant North Street on the doorstep and being a short walk from both countryside (Ashton Court) and the city centre, BS3 has been the perfect base. Over our time here we have lovingly restored, extended and modernised the house to a family home we are proud of. From cosy winter evenings in front of the log burner to glorious summers in the quiet suntrap garden, we have so many fond memories here. Banwell Road is a fantastic, welcoming street. Our neighbours harbour a real sense of community which is something else we will be sad to be leaving."*

